

SAF 7 demo paigaldus.

1. Eeldused

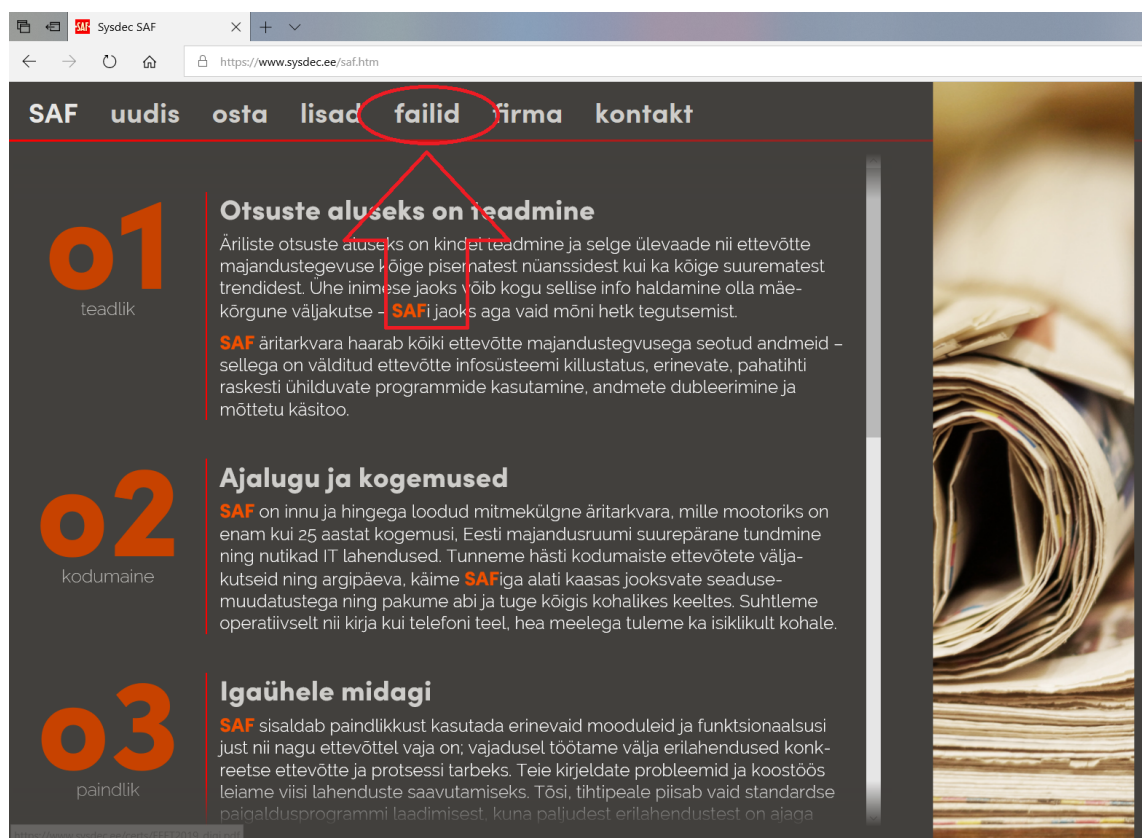
SAF 7 demo vajab 32- või 64-bitist Windows 7, Windows 8, Windows 10, Windows Server 2008 R2, Windows Server 2012, Windows Server 2012 R2, Windows Server 2016 või Windows Server 2019 operatsioonisüsteemi.

Vähemalt 1 GHz kiirusega protsessorit ja 2 GB mälu ning 2 GB vaba kettaruumi.

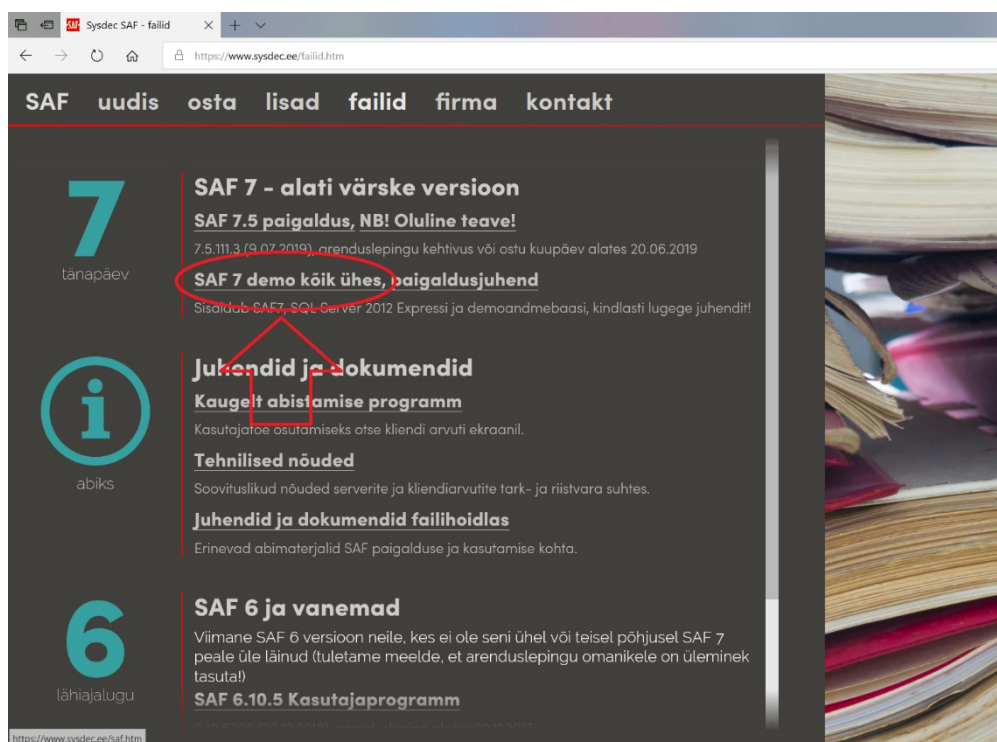
Kui tahate, et paigaldus käiks läbi kiiremini, paigaldage kõigepealt ise .NET 4.6. Sellest lähemalt saate lugeda osas Lisa 1. (Windows 10 puhul on .NET 4.6 juba olemas)

2. Paigaldamine

Avage www.sysdec.ee ja valige failid:

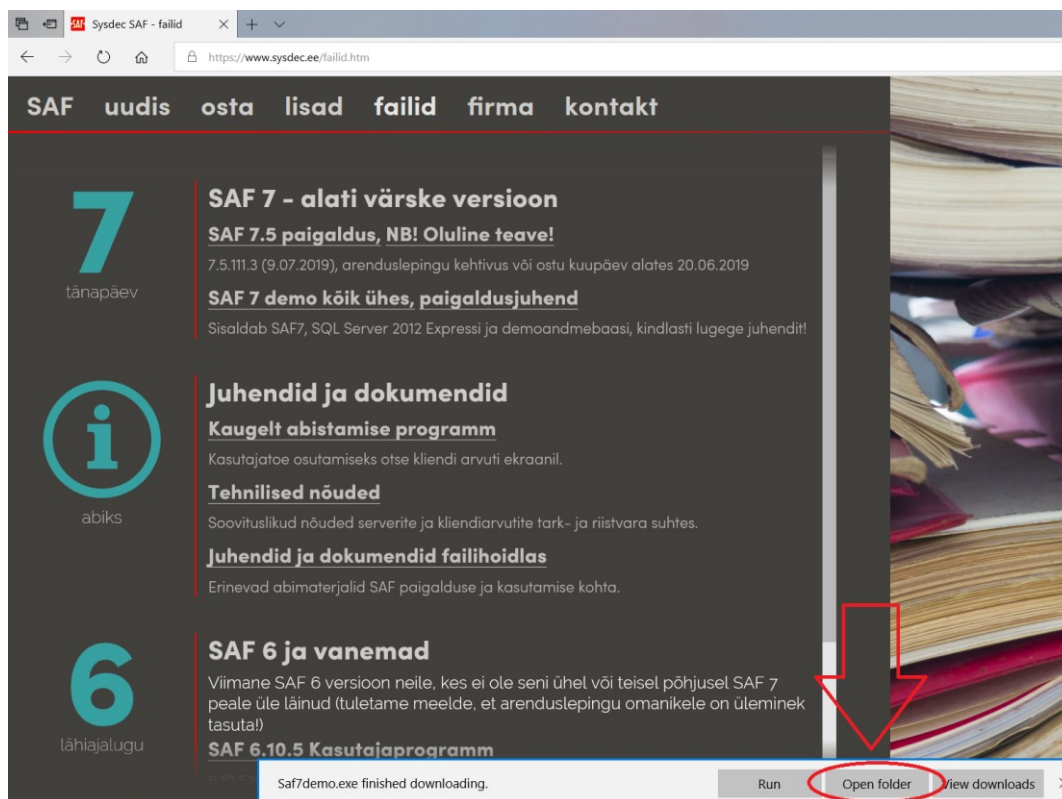


Avaneb Sysdec'i tootete allalaadimiste lehekülg:

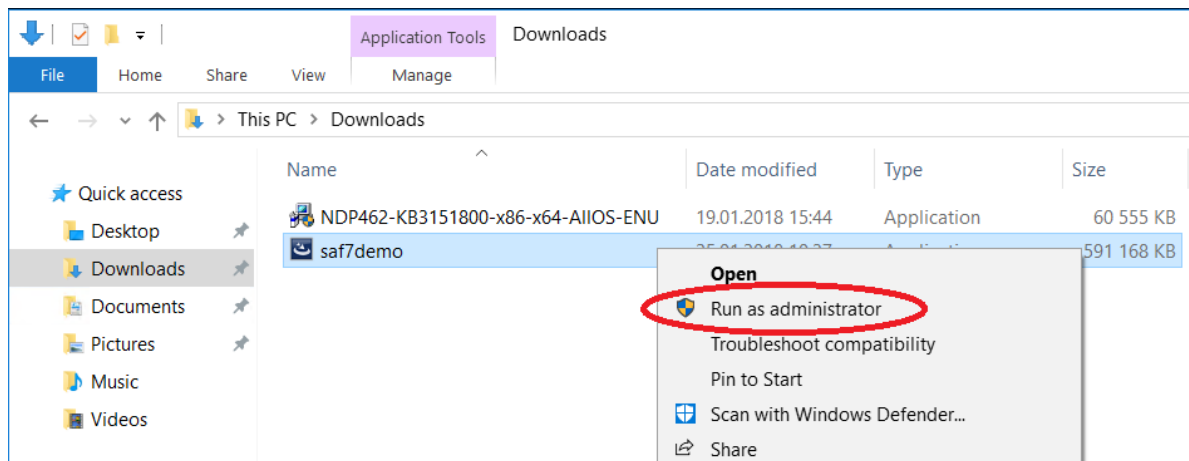


Vajutage SAF 7 kõik ühes Demo peale. Küsimuse peale, mida Saf7demo.exe-ga edasi teha vajutage Save.

Kui allalaadimine on lõppenud, siis küsitakse uuesti, mida edasi teha:

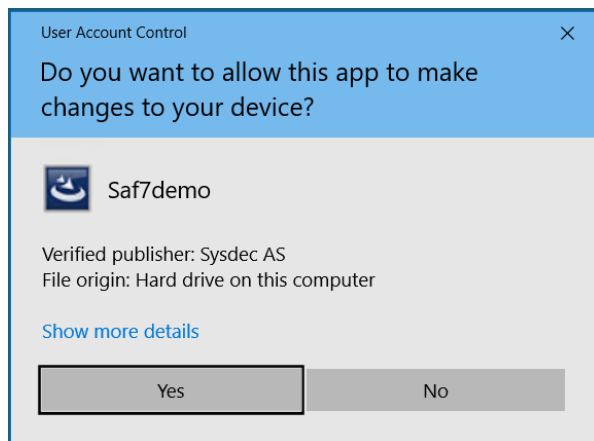


Valige Open Folder, mis avab allalaadimiste kausta:



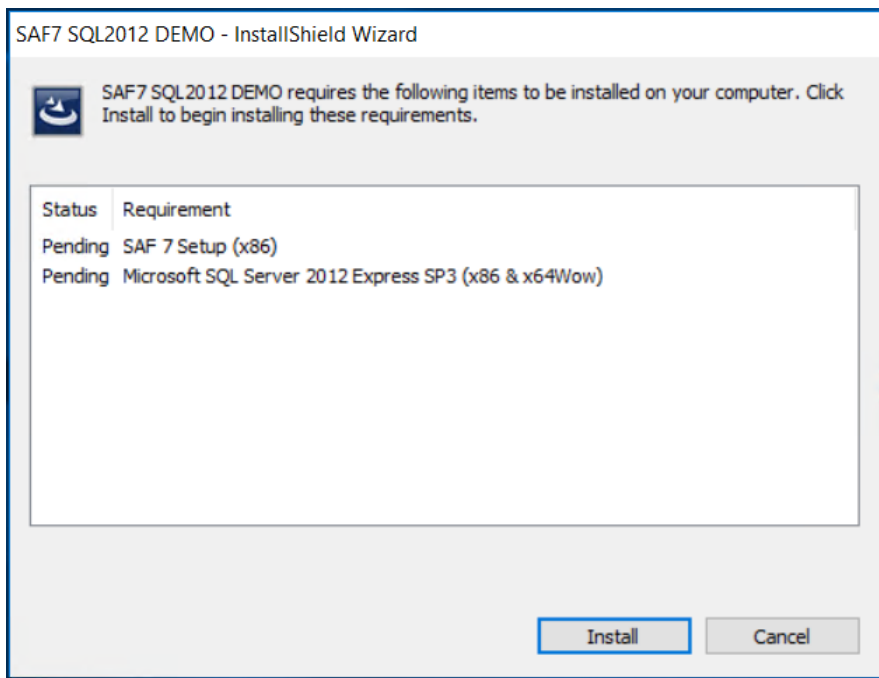
Klõpsake parema hiirenupuga saf7demo peale ja valige menüüst „Run as administrator“

Võib tekkida UAC hoiatus:



Vastake Yes.

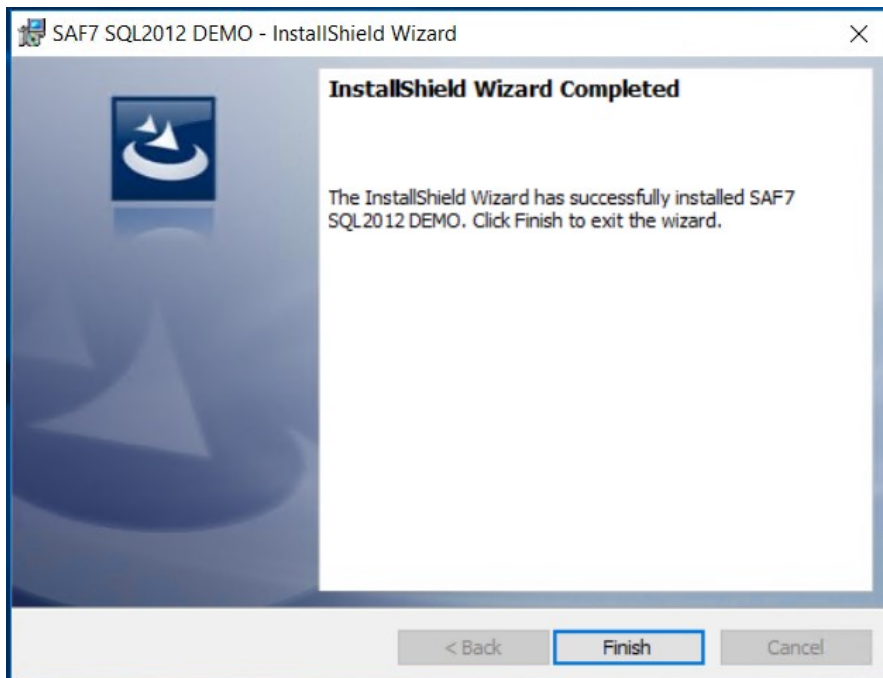
Kui masinas pole Microsoft SQL Serverit ega SAFi siis avaneb vajalike lisade paigalduse aken:



Vajutage Install

Nüüd võib minna päris pikalt, sest paigaldatakse SAF, SQL andmebaasimootor ja demoandmetega baas.

Järgmisena avaneb:



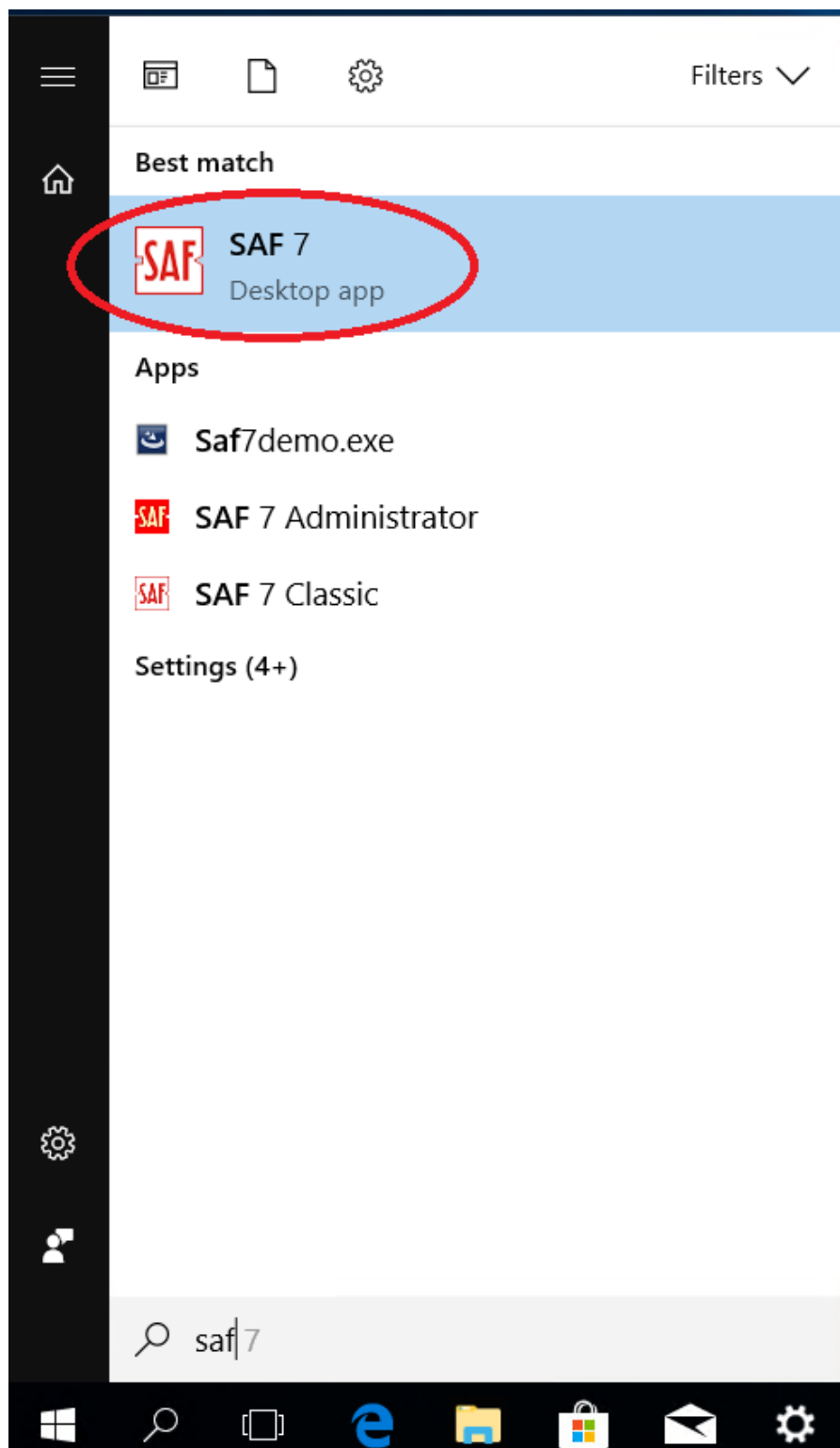
Vajutage Finish

NB! Kui juhtub, et viimast ekraani ei teki, siis käivitage saf7demo uuesti.

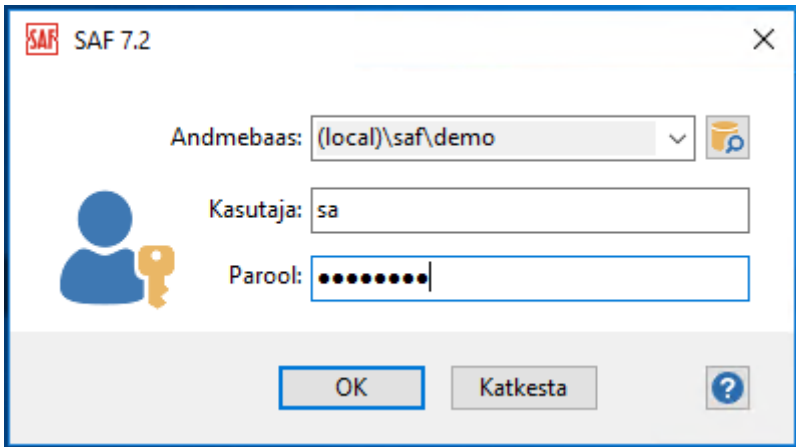
SAF 7 demo on paigaldatud! Kui soovita ka SQL haldamise vahendeid, siis vaadake Lisa 2.

3. Käivitamine

Kirjutage Start riba otsingusse SAF ja avage SAF 7 Desktop App või SAF 7 Classic:



Avaneb Login aken:



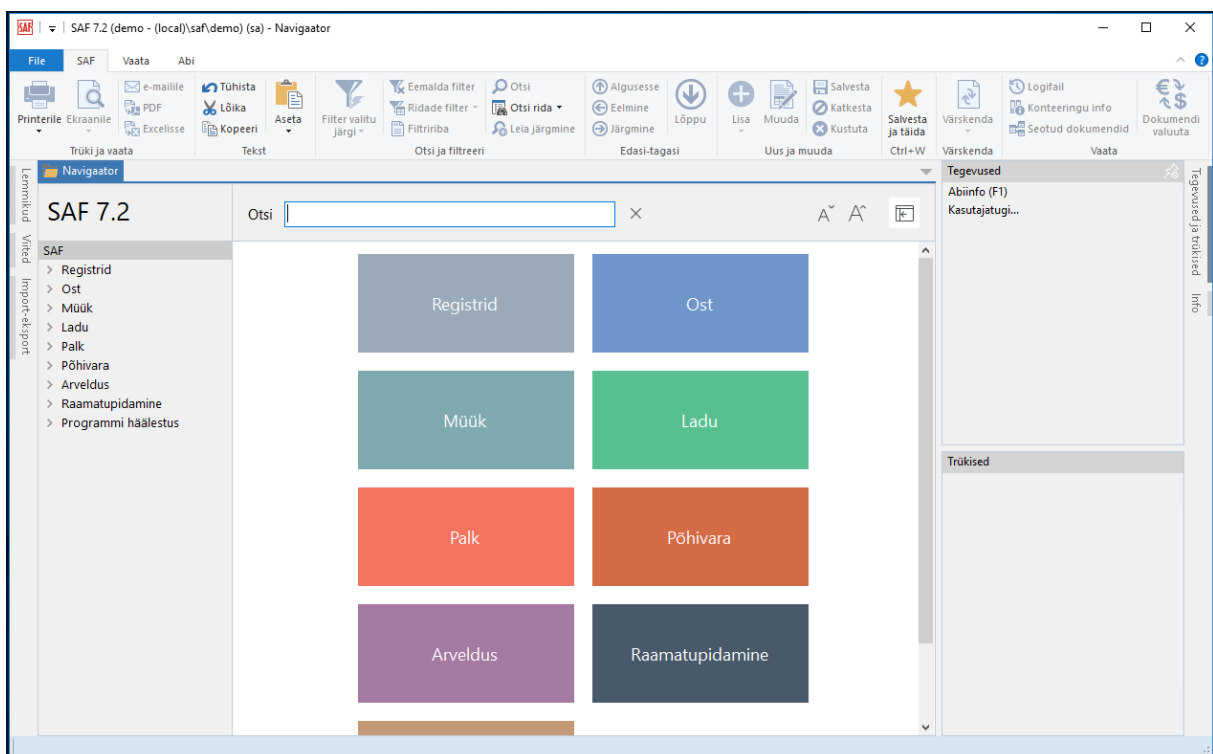
The image shows the SAF 7.2 login dialog box. It has a title bar with the SAF logo and 'SAF 7.2'. The main area contains a dropdown menu for 'Andmebaas:' with '(local)\saf\demo' selected. Below it are input fields for 'Kasutaja:' (username) with 'sa' entered and 'Parool:' (password) with masked characters. To the left of the password field is a blue user icon and a yellow key icon. At the bottom are 'OK' and 'Katkesta' buttons, and a help icon on the right.

Sisestage parool Saf6demo , suur ja väiketähed on olulised

Vajutage OK

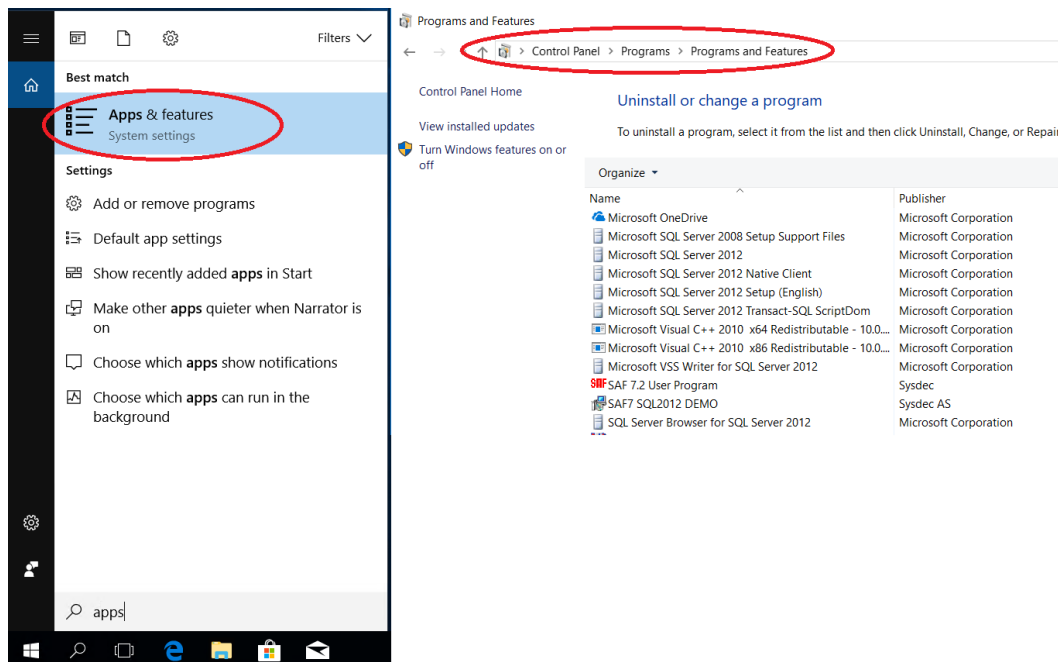
NB! Kui Andmebaasi rida on tühi, siis on paigaldusel midagi pooleli jäänud. Restartige masin ja käivitage alla laetud Saf7demo uuesti (vt peatükk 2.Paigaldamine)

SAF 7 avaneb ja on kasutamiseks valmis:

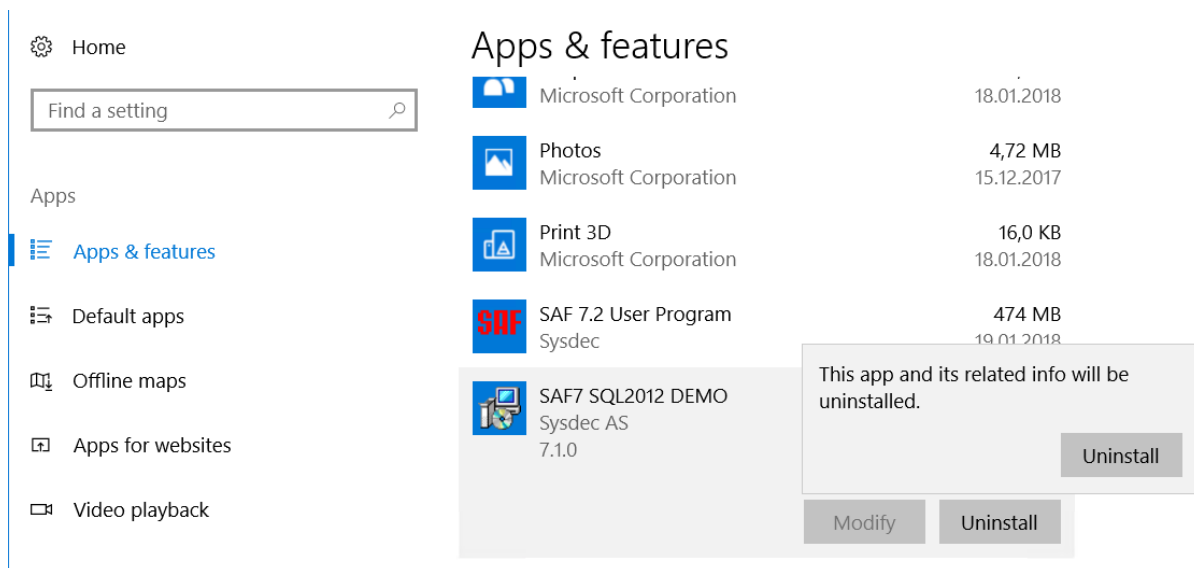


4.SAF 7 demo eemaldamine arvutist

Avage Apps & Features või Control panel->Programs->Uninstall a Program:

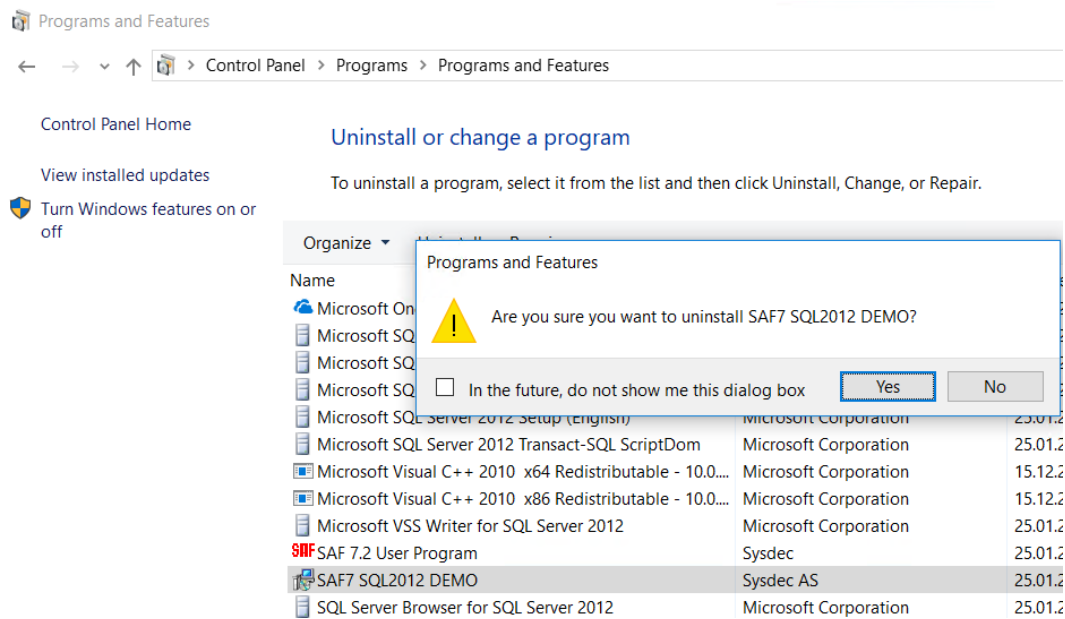


Otsige üles SAF7 SQL 2012 DEMO ja tehke selle peale hiireklõps ja vajutage Uninstall



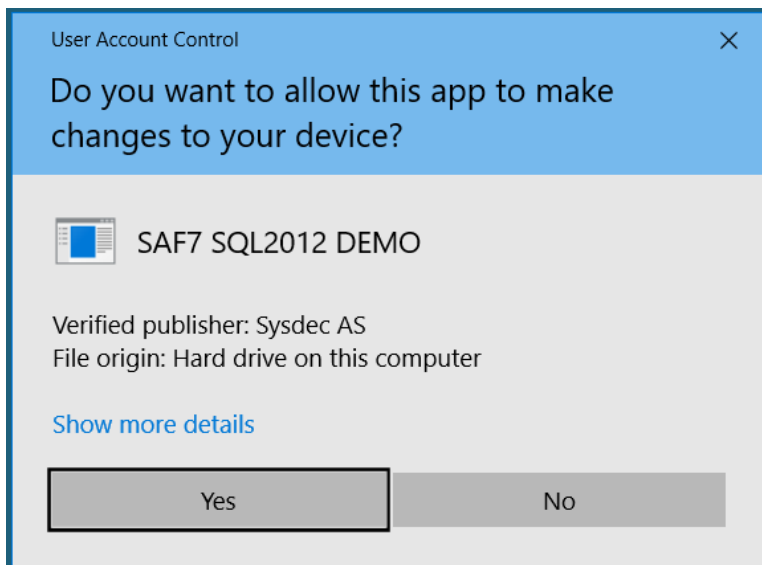
Hoiatusele „This app and its related info will be uninstalled“, vajutage uuesti Uninstall

Control Paneli kasutamisel on teade „Are you sure you want to uninstall SAF 7 SQL2012 DEMO?:



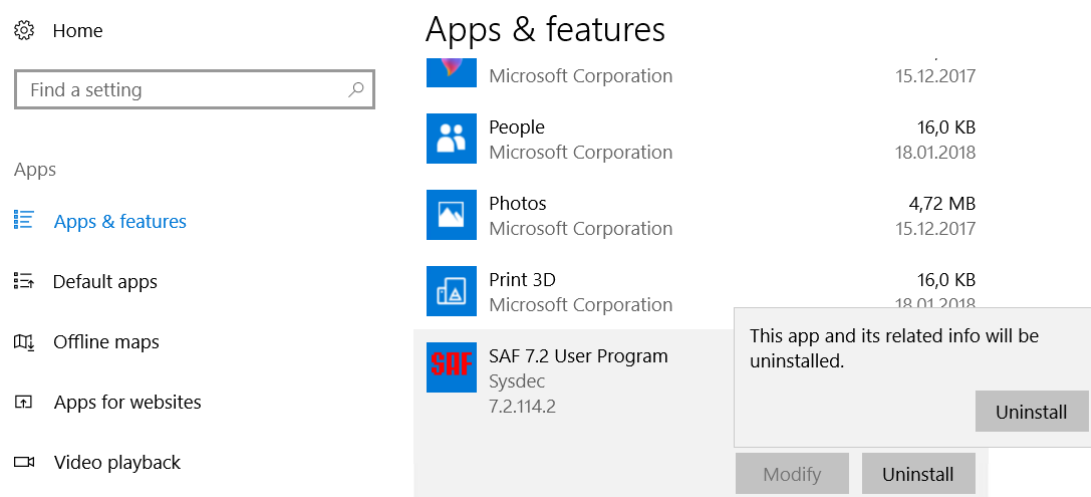
Valige Yes

Võib tekkida UAC hoiatus:



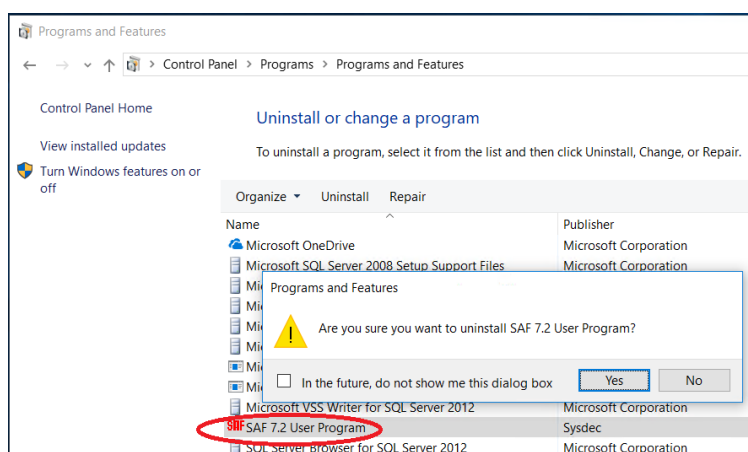
Vastake Yes.

Järgmisena tehke hiireklõps SAF 7 User Program peale ja vajutage Uninstall



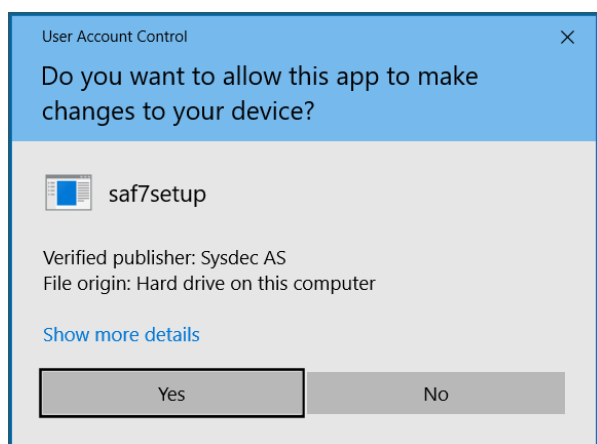
Hoiatusele This app and its related info will be uninstalled, vajutage uuesti Uninstall

Kui kasutate Control Panelit, siis tehke topeltklõps „SAF 7.2 User Program“ peale, misjärel võib tulla hoiatus „Are you sure you want to uninstall SAF 7.2 User Program?“



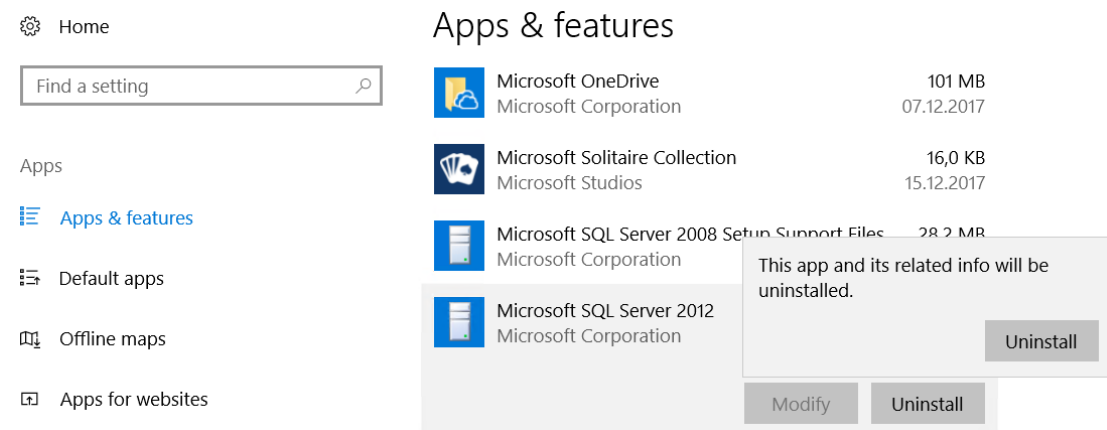
Vastake Yes

Võib ilmuda UAC hoiatus



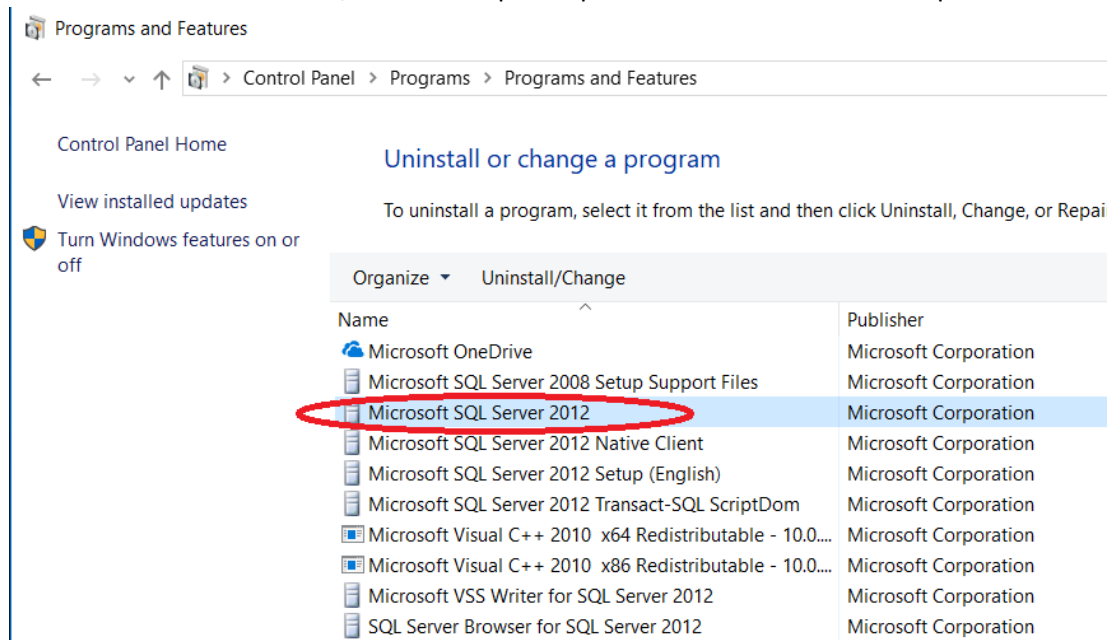
Vastake Yes.

Leidke ja tehke hiireklõps SQLServer 2012 peale ja vajutage Uninstall

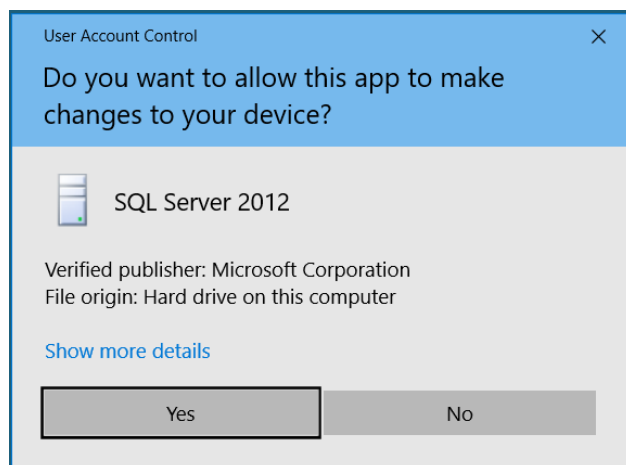


Hoiatuse peale „This app and its related info will be uninstalled“, vajutage uuesti Uninstall.

Kui kasutate Control Panelit, siis tehke topeltklõps Microsoft SQL Server 2012 peal.

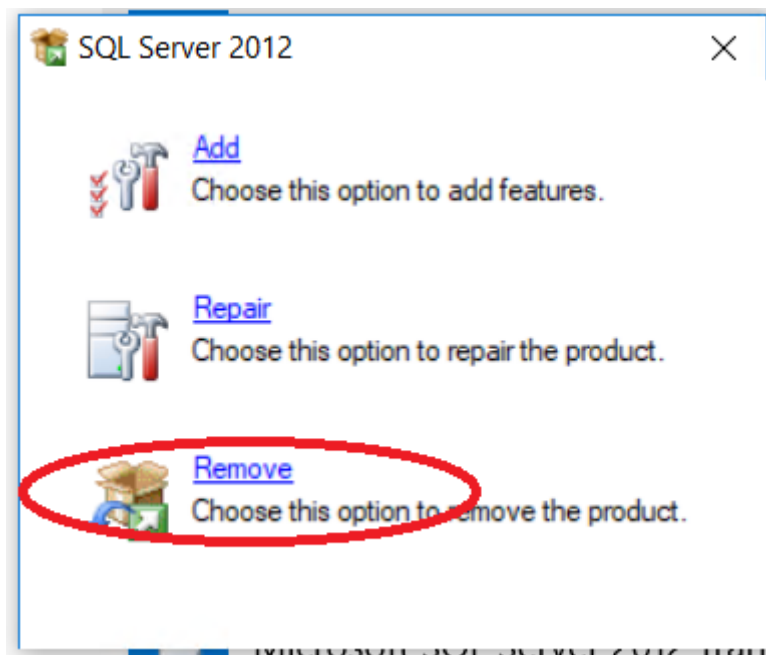


Võib tulla UAC hoiatus:



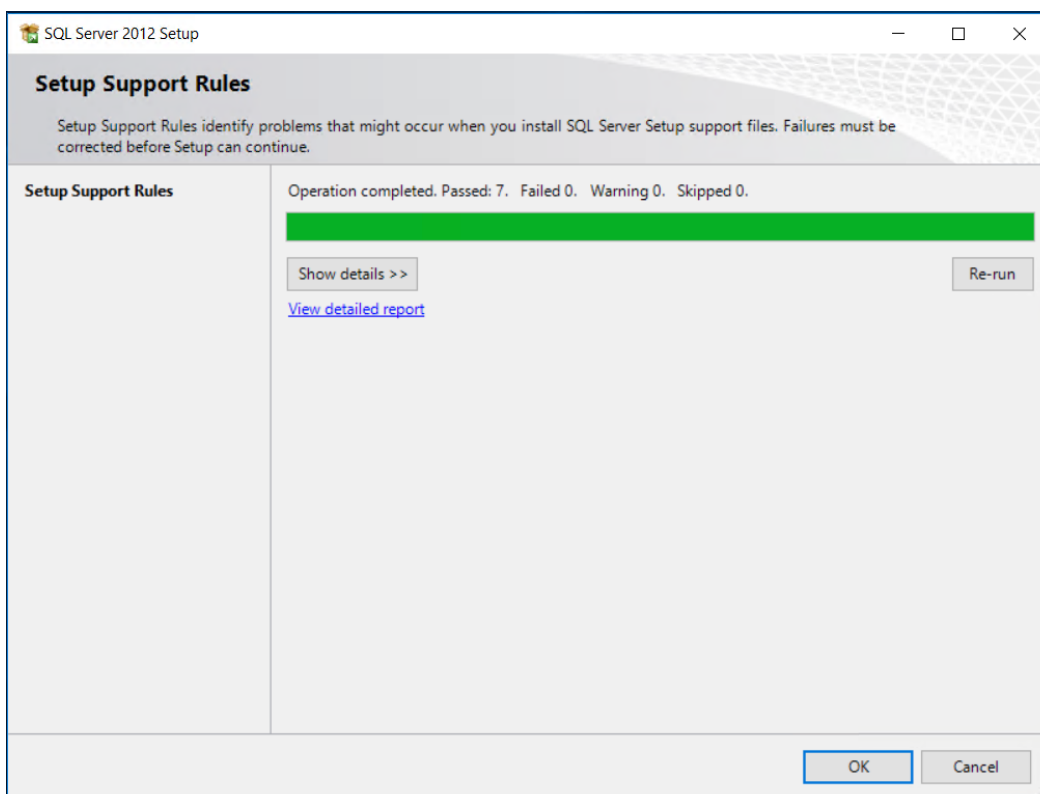
Vastake Yes.

SQL Serveri paigaldamine ja eemaldamine käib läbi eraldi paigaldusprogrammi:



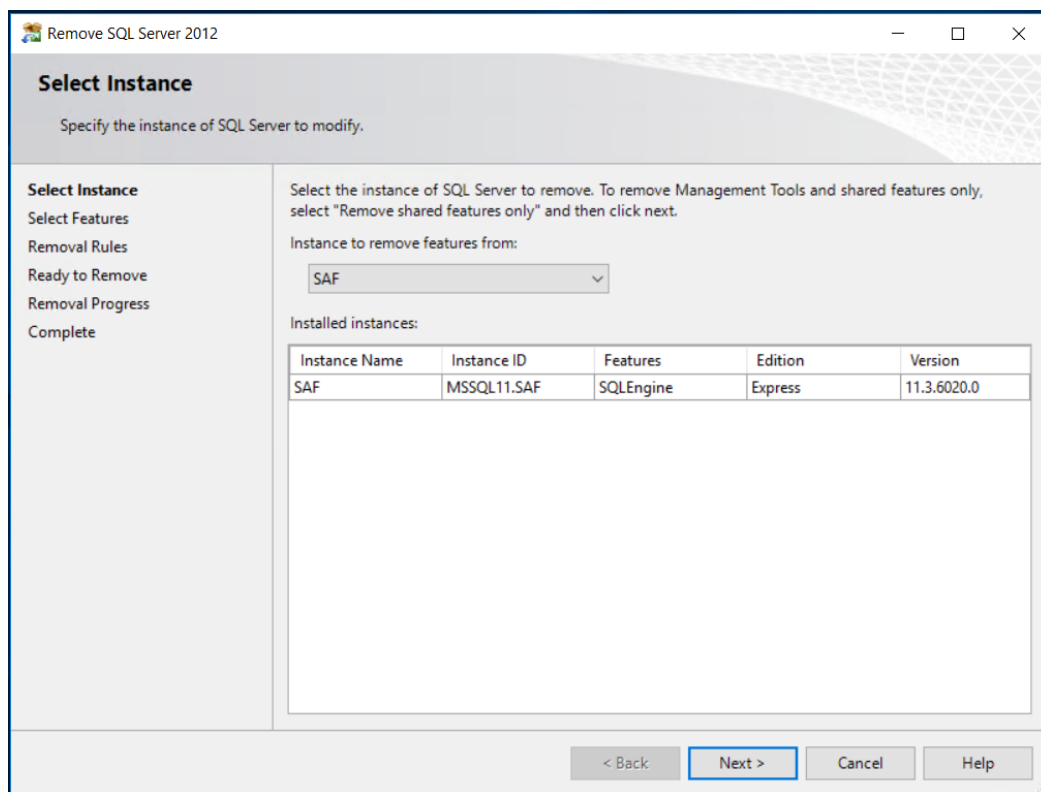
Valige Remove.

Avaneb Setup Support Rules:



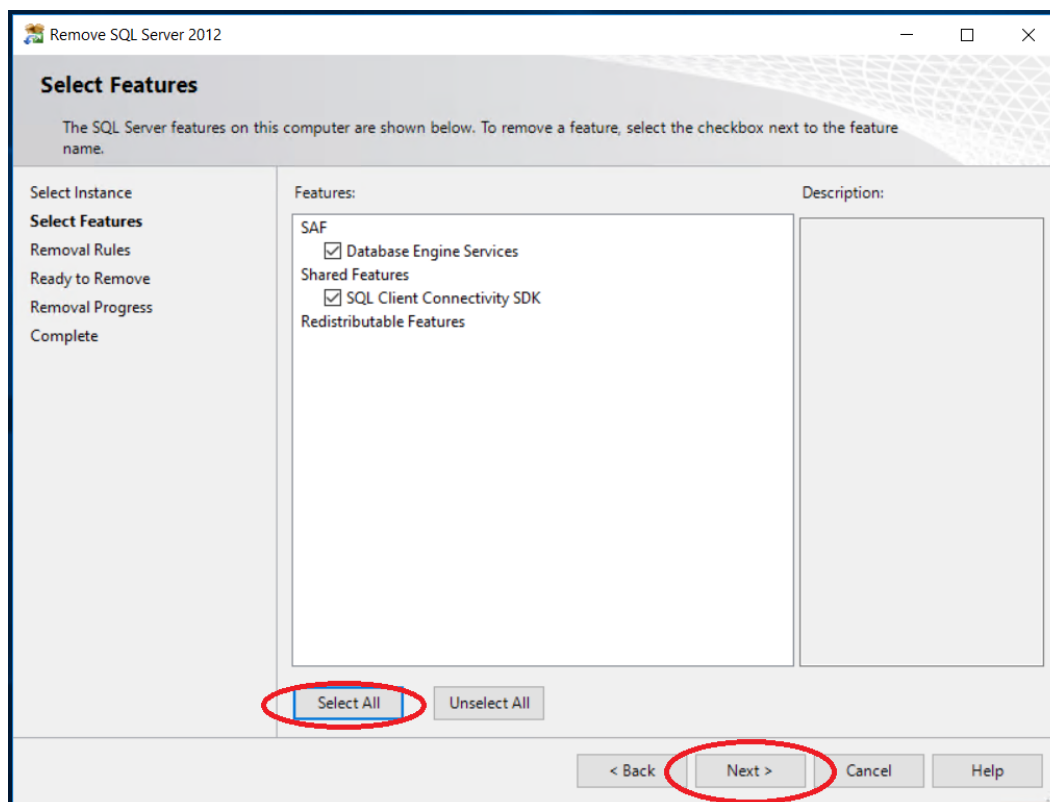
Vajutage OK

Avaneb Select Instance. Kontrollige, et „Instance to remove features from:“ järel oleks valitud SAF!



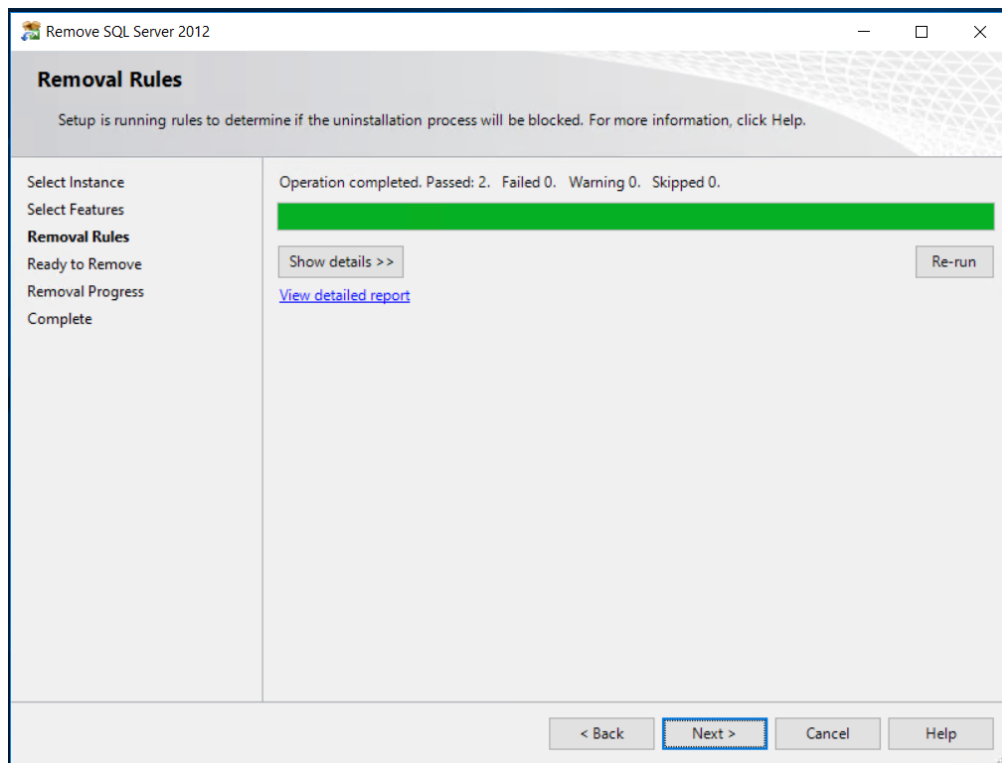
Vajutage Next

Avaneb Select Features:



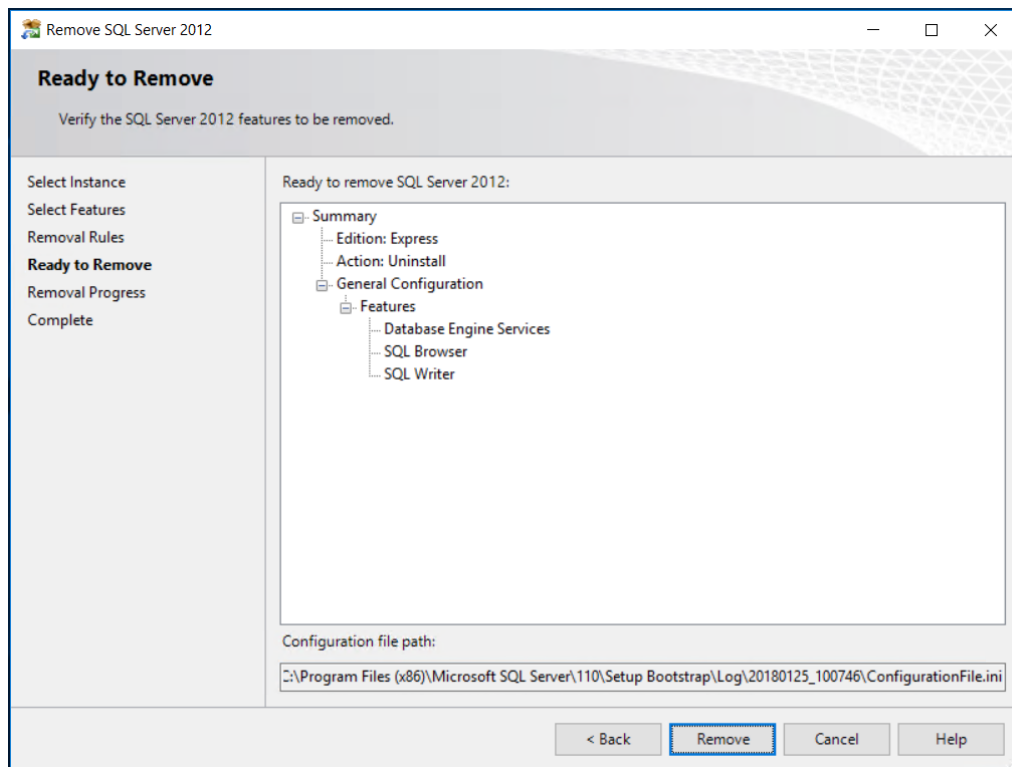
Vajutage Select All ja seejärel Next

Avaneb Removal Rules:



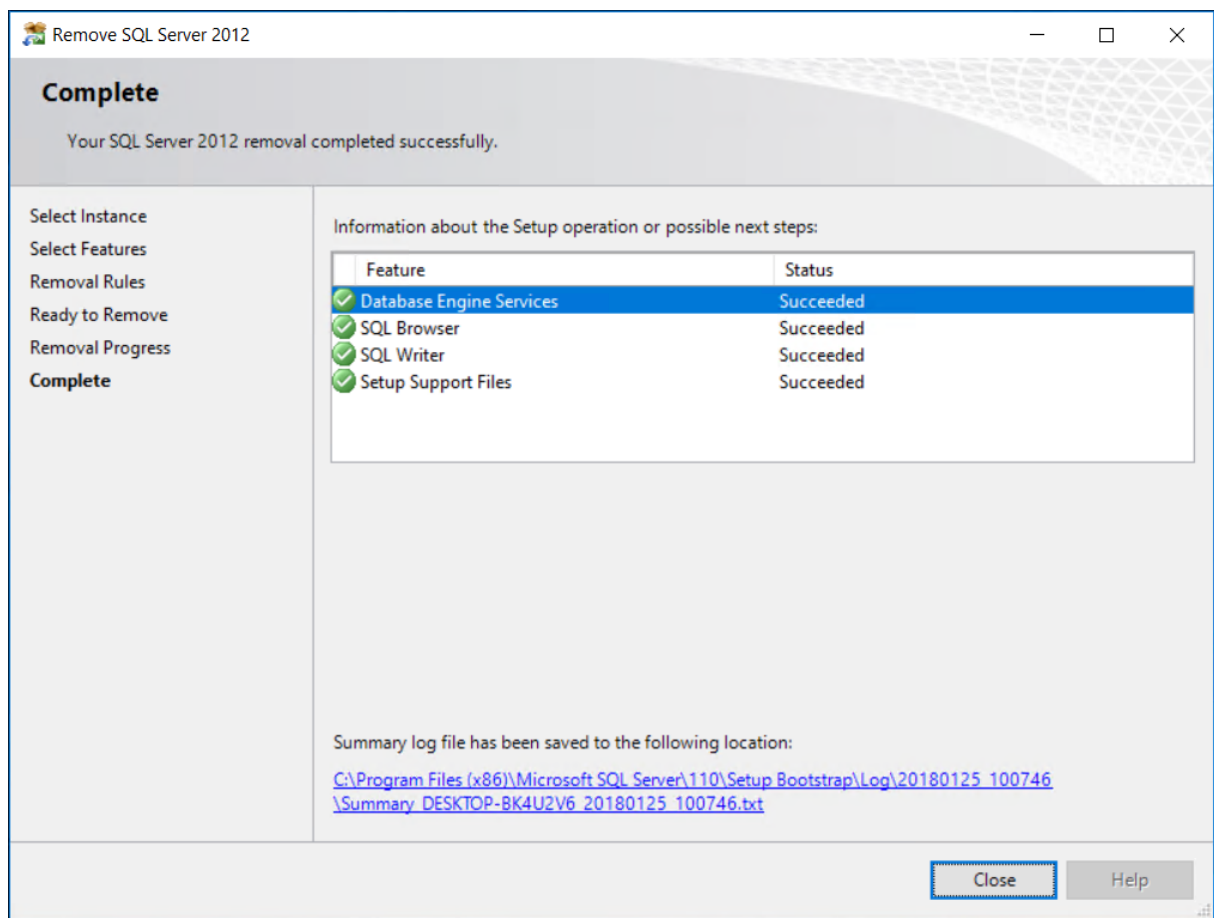
Vajutage Next>

Avaneb Ready to Remove



Vajutage Remove

Kui SQL Serveri eemaldamine on lõppenud (mis võib võtta mõnevõrra aega) avaneb Complete:



Vajutage Close

SAF 7 demo on masinast eemaldatud.

Lisa 1 :NET 4.6 paigaldamine.

Avage lehekülg:

<https://www.microsoft.com/en-us/download/details.aspx?id=53344>

Microsoft .NET Framework 4.6.2 (Offline Installer) for Windows 7 SP1, Windows 8.1, Windows 10, Windows 10 November Update, Windows Server 2008 R2 SP1, Windows Server 2012 and Windows Server 2012 R2

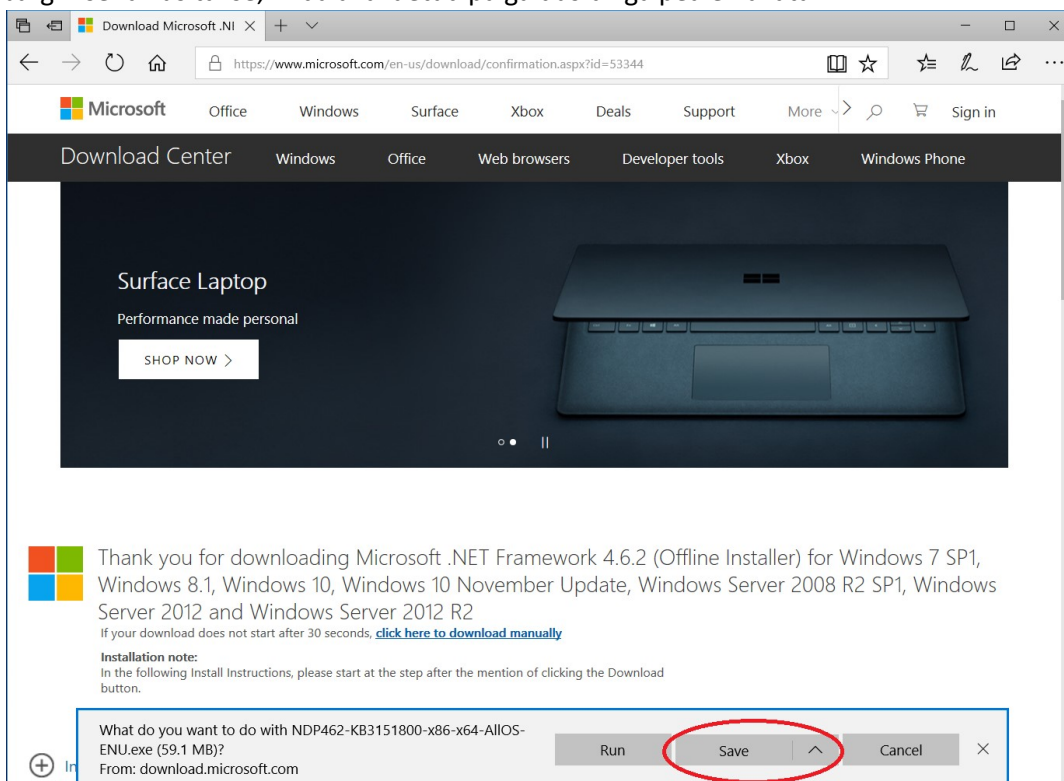
Important! Selecting a language below will dynamically change the complete page content to that language.

Select Language:

The Microsoft .NET Framework 4.6.2 is a highly compatible, in-place update to the Microsoft .NET Framework 4/4.5/4.5.1/4.5.2/4.6/4.6.1. The offline package can be used in situations where the web installer cannot be used due to lack of internet connectivity.

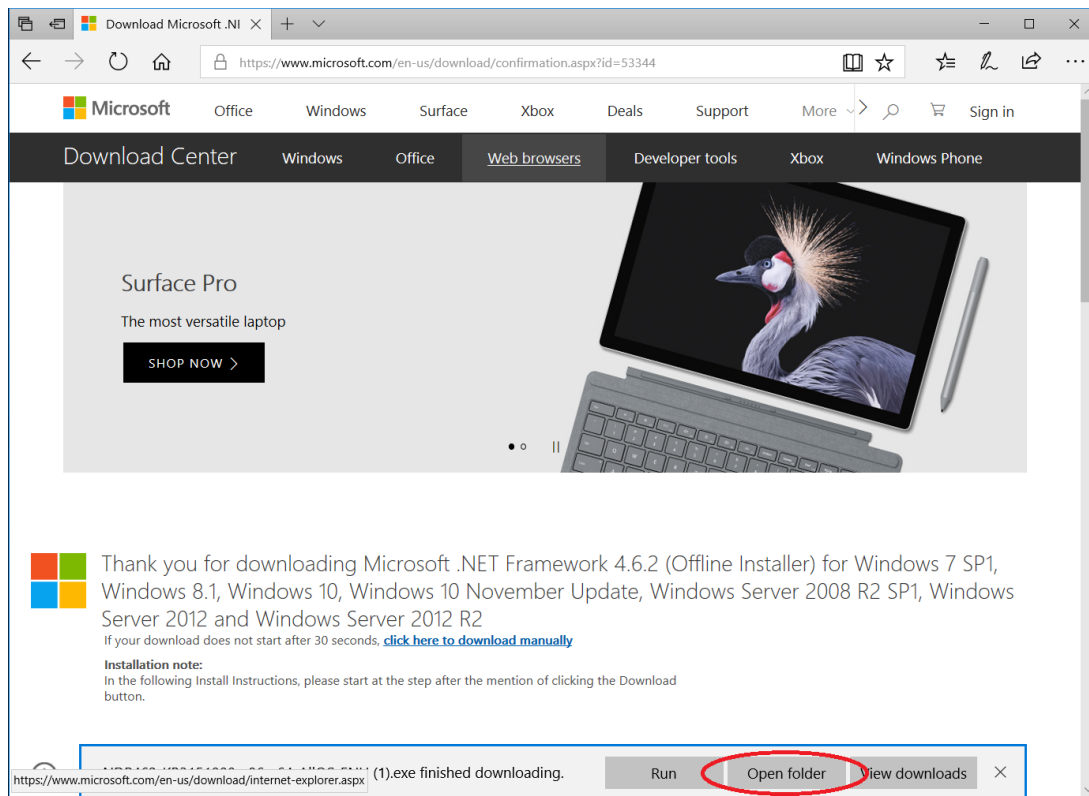
Ja vajutage Download.

Järgmisena küsitakse, mida alla laetud paigaldusfailiga peale hakata.



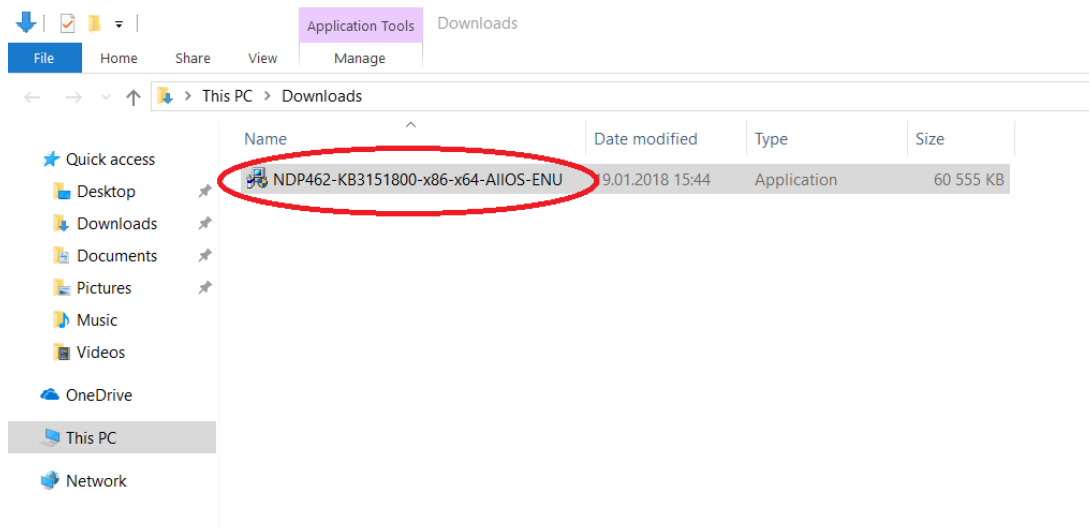
Vastake Save. (Võite ka soovi korral kohe käivitada Run abil)

Kui allalaadimine on lõppenud, siis küsitakse, mida peale hakata:



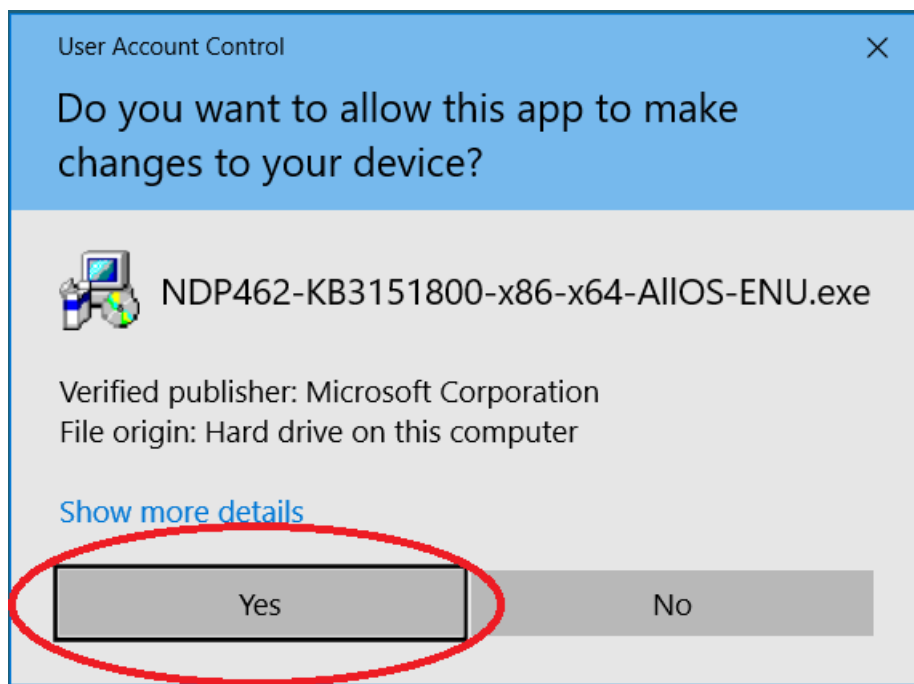
Valige Open Folder.

Nüüd avatakse allalaadimiste kataloog:



Tehke topeklõps allalaetud „NDP462-KB3151800-x86-x64-AllOS-ENU.exe“ peal.

Võib tekkida UAC hoiatus:

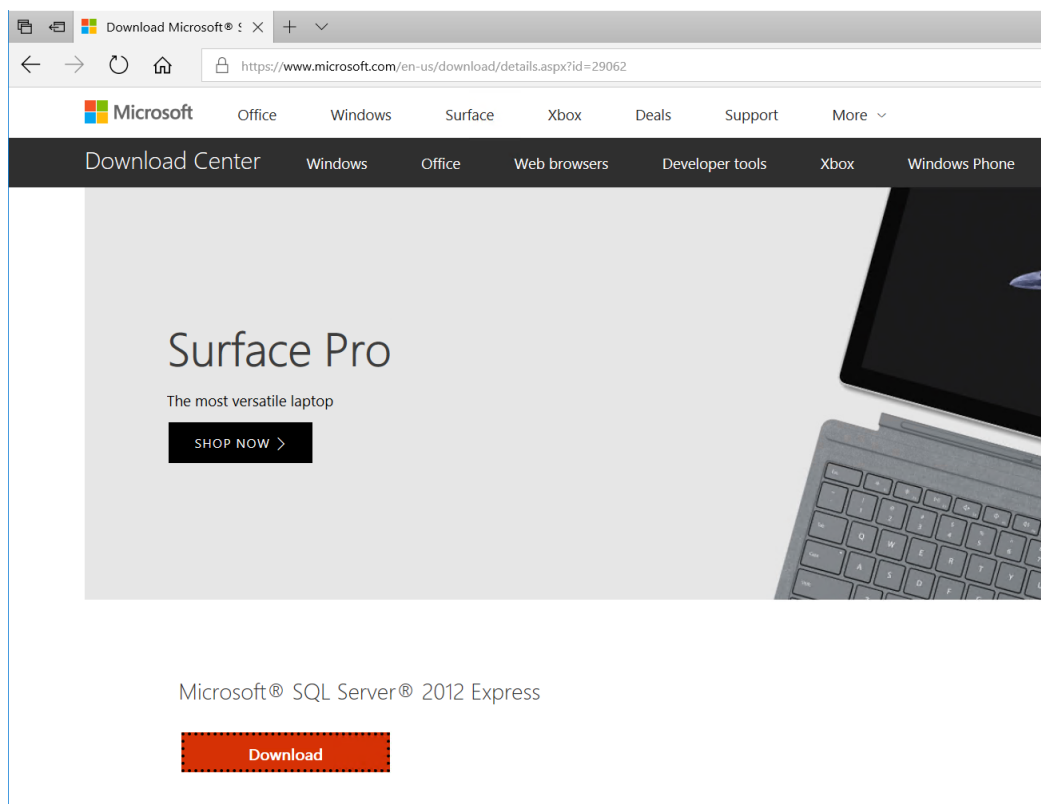


Vajutage Yes

. NET 4.6 paigaldus võib võtta päris kaua. Peale selle lõppemist võib arvuti nõuda restarti.

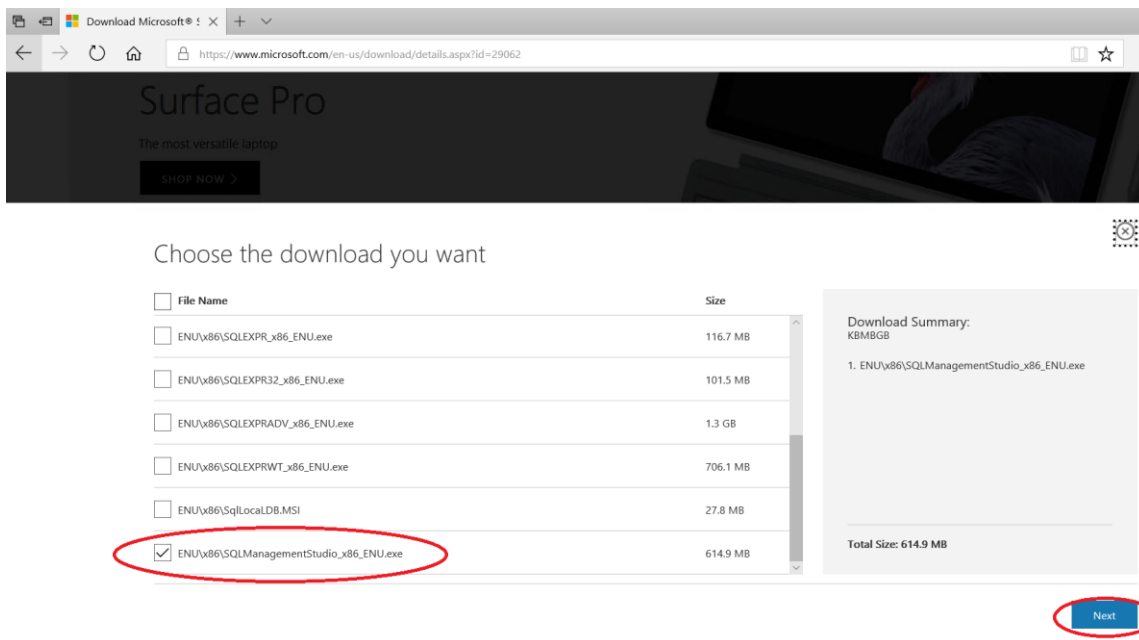
Lisa 2 SQL Management Studio paigaldamine

Avage <https://www.microsoft.com/en-us/download/details.aspx?id=29062>

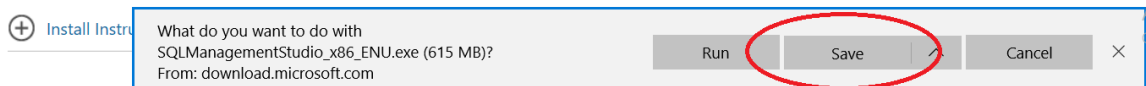
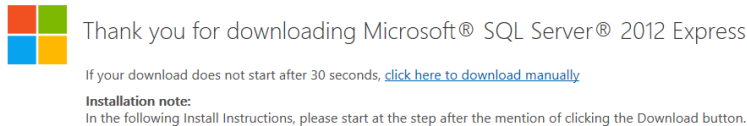
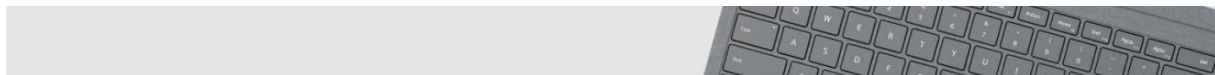


Vajutage Download

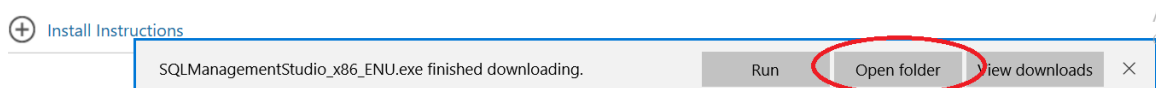
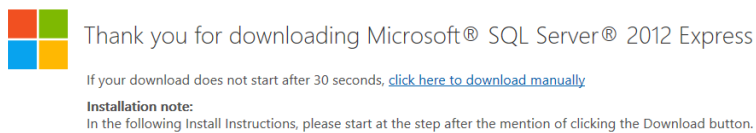
Avaneb Choose the download you want:



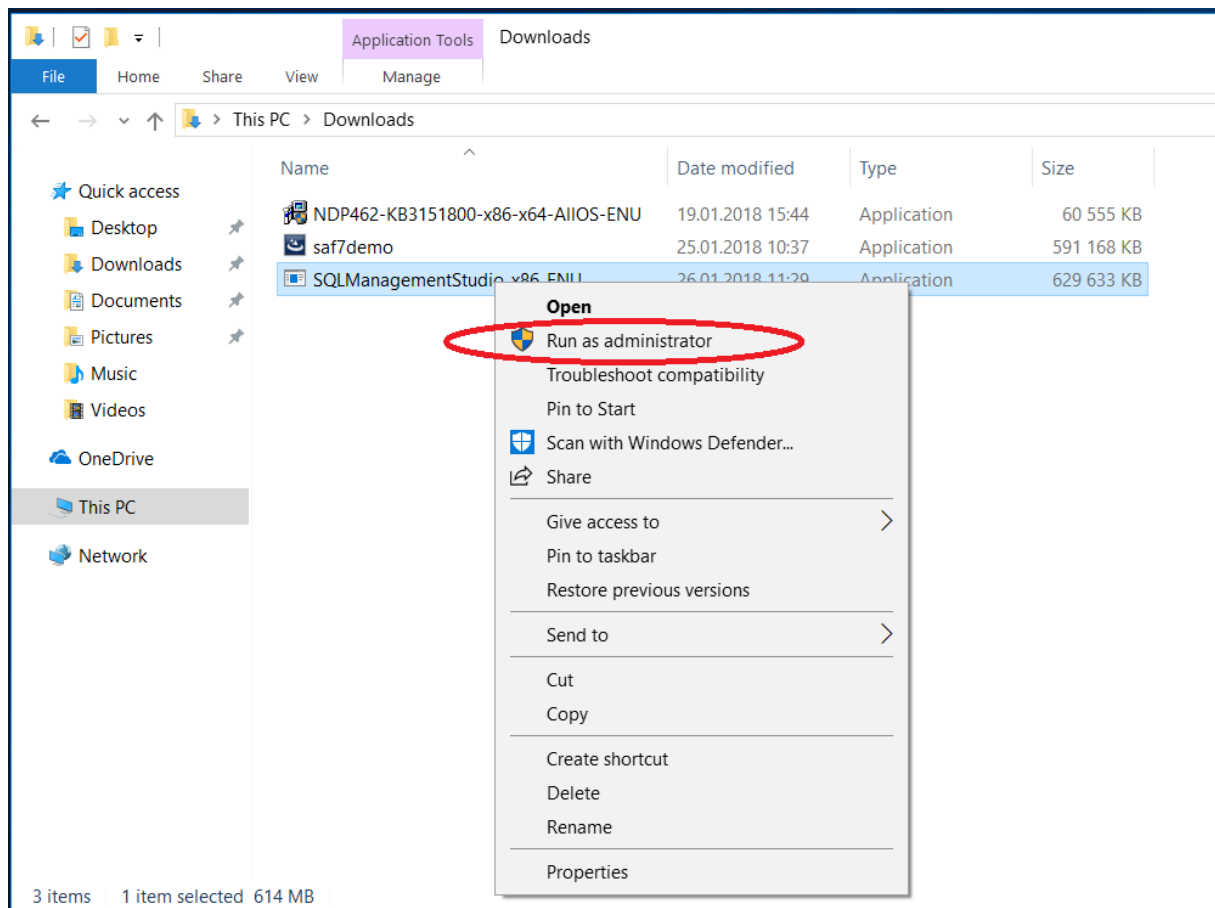
Valige ära ENU\x86\SQLManagementStudio_x86_ENU.exe ja vajutage Next.



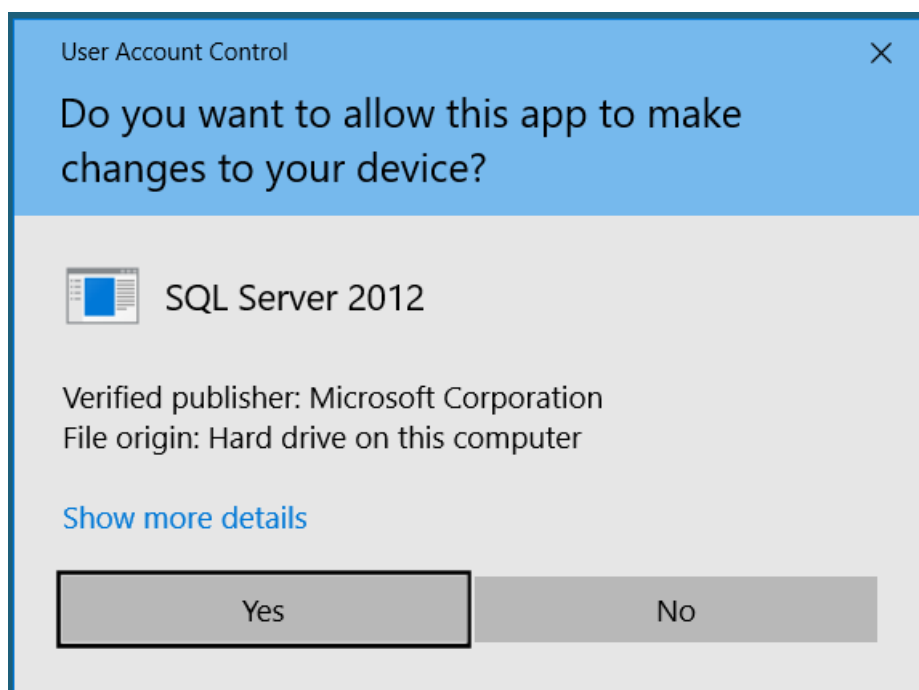
Kui allalaadimine on lõppenud, siis avaneb:



Vajutage Open Folder:

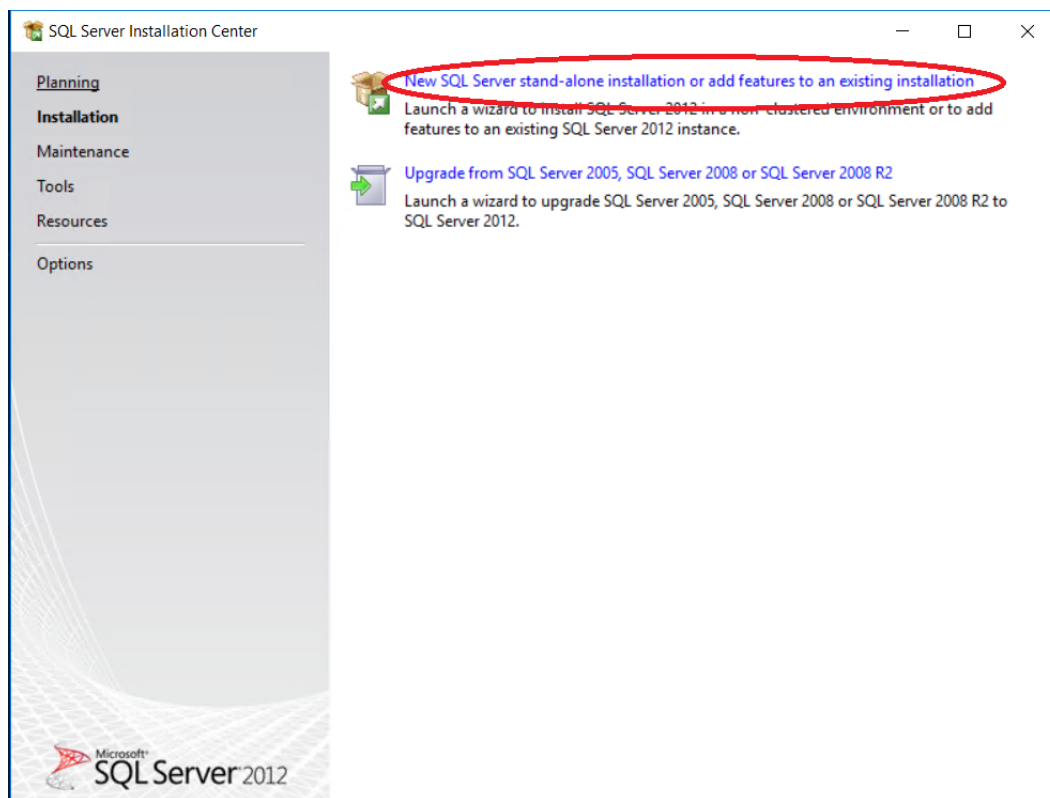


Võib tekkida UAC hoiatus:



Vajutage Yes

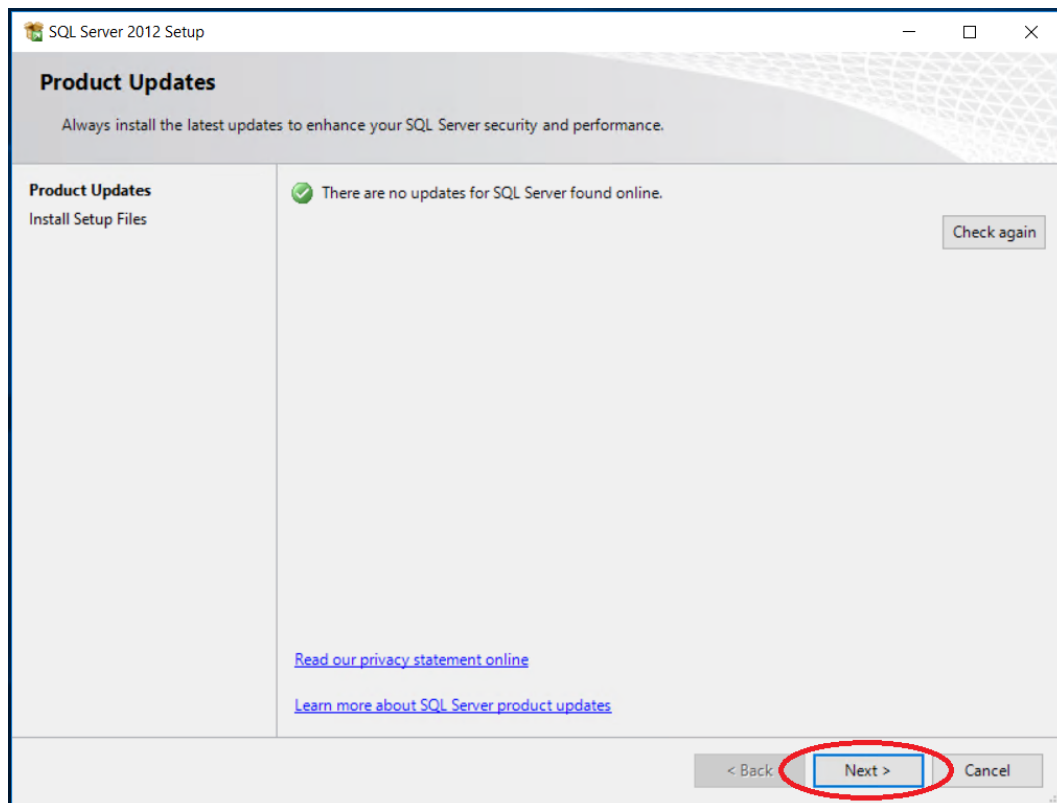
Avaneb SQL Server Installation Centre



Klõpsake

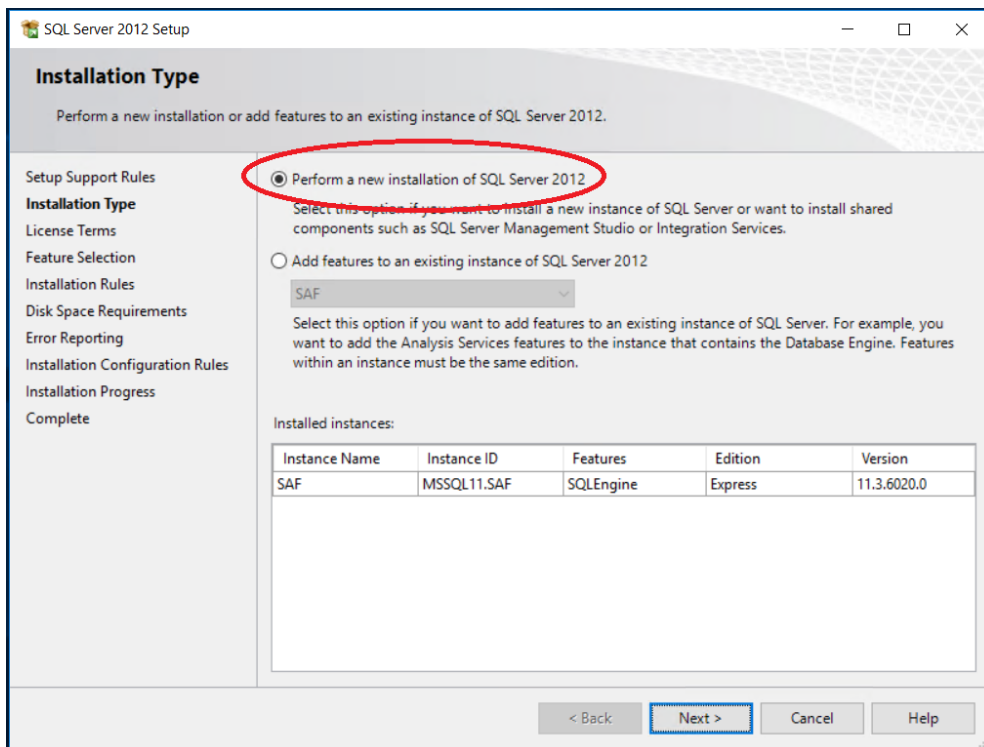
„New SQL Server stand-alone installation or add features to an existing installation“ peale.

Võib tulla teade SQL Serveri uuenduste kohta:



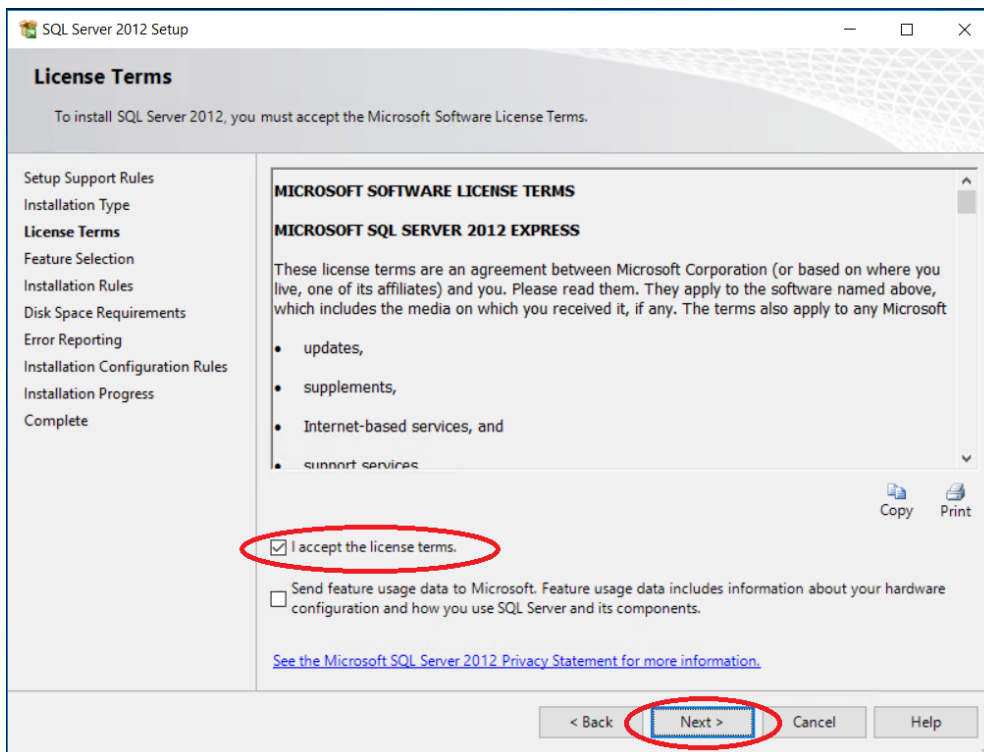
Vajutage Next>

Avaneb



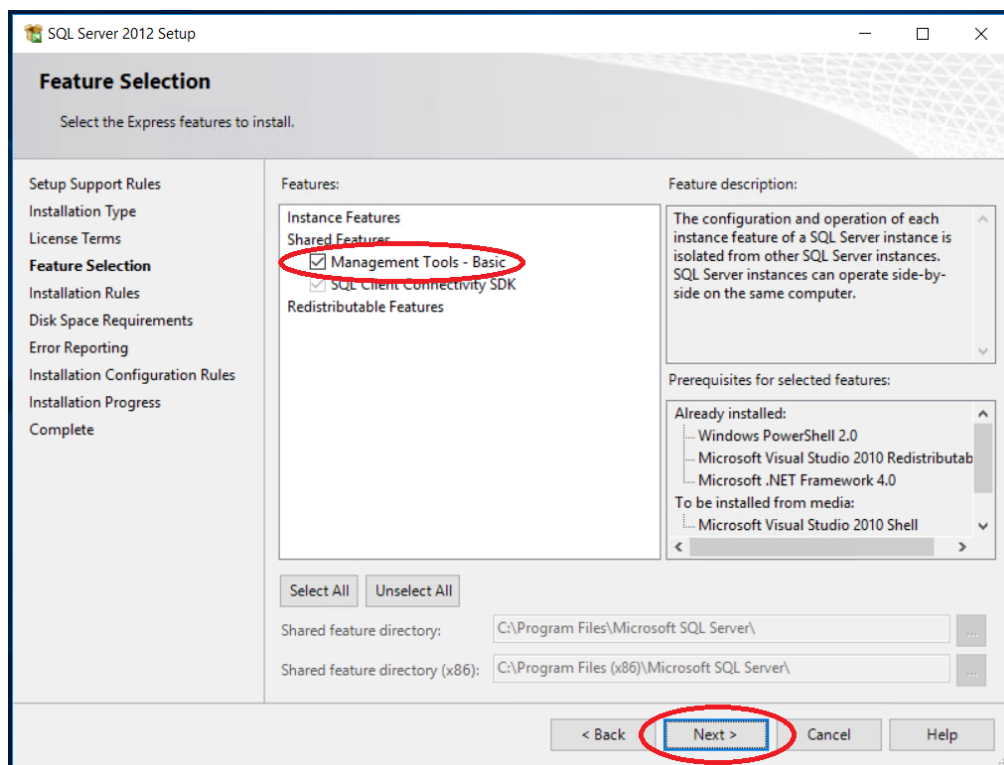
Valige Perform a new installation of SQL Server 2012

Avaneb litsentsitingimuste aken:

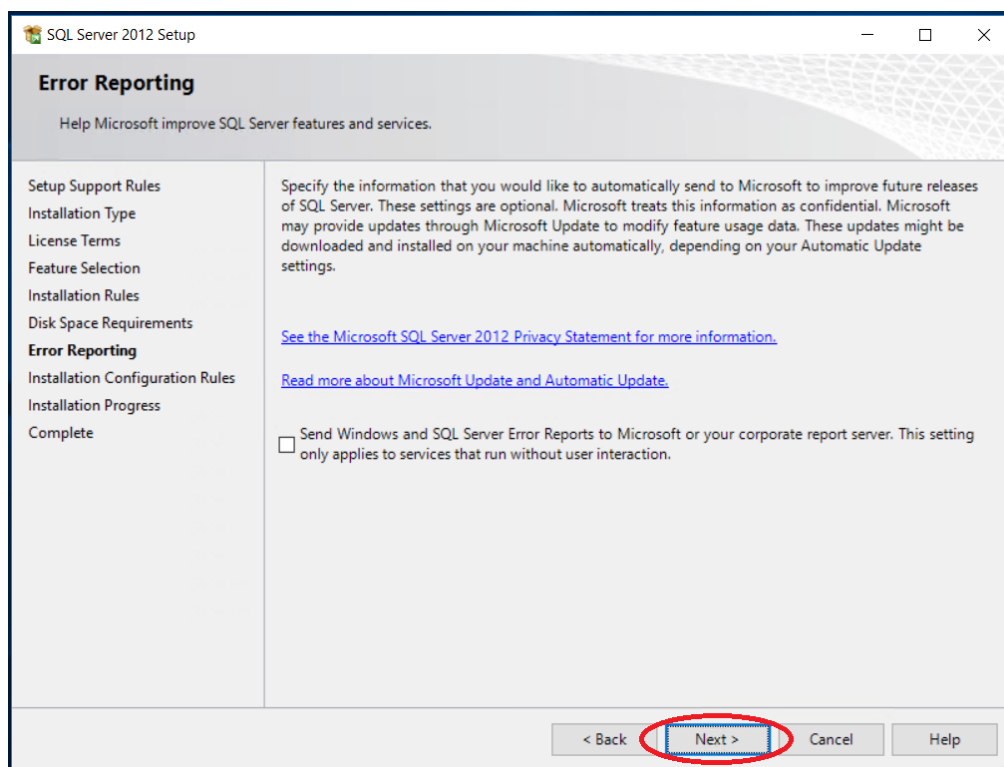


Pange „linnuk“ „I accept the license terms.“ ette ja vajutage Next

Avaneb Feature Selection:

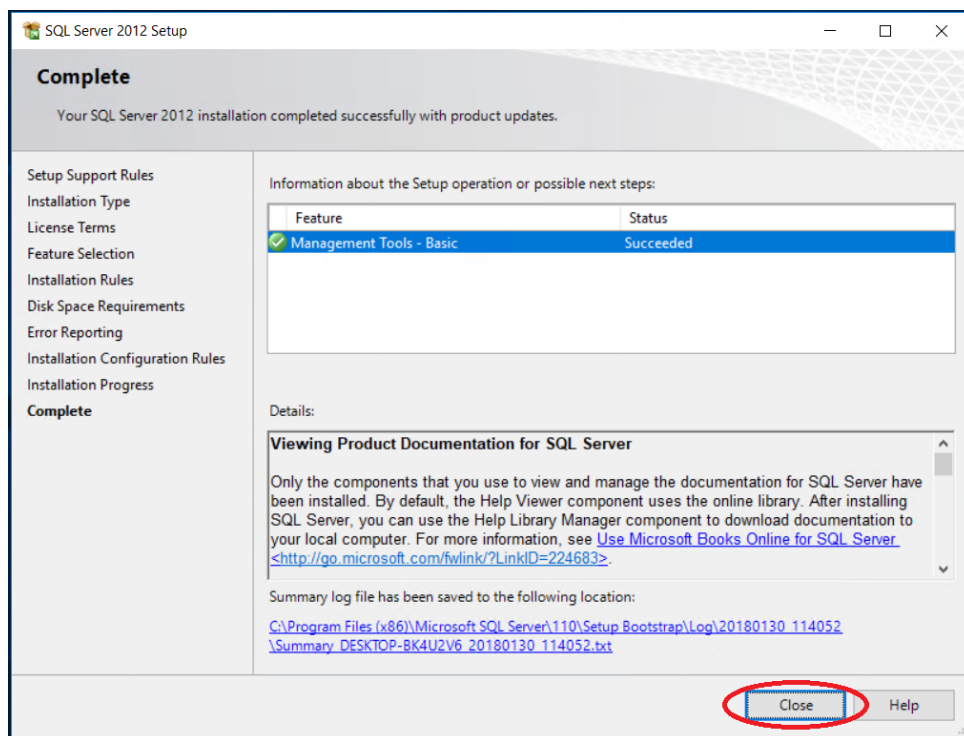


Kontrollige, et on „linnuke“ „Management Tools – Basic“ ees ja vajutage Next>



Vajutage Next >.

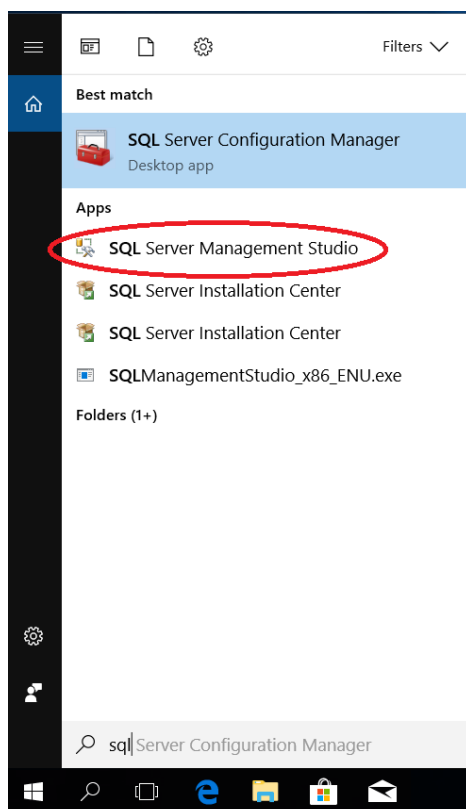
Avaneb ekraan Complete:



Vajutage Close

SQL Server Management Studio on paigaldatud.

Käivitada saab SQL Server Management Studio Start menüü abil:



Lisa 2: Tulemüüri reeglid (need on vajalikud ainult siis kui tahetakse demobaasile ligi pääseda mõnest teisest masinast)

Microsofti vastav artikkel asub <http://technet.microsoft.com/en-us/library/ms175043.aspx>

Et lubada **named instance SAF** läbi lokaalse tulemüüri, tuleb lubada tulemüürist läbi 2 protsessi. SQL server ja SQL Browser.

NB! Kindlasti kontrollige, et SQL Server Browser teenus ikka töötab!

SQL Browseri tulemüürist läbi lubamiseks on käsurida:

```
netsh advfirewall firewall add rule name="SQL Browser" dir=in action=allow  
protocol=UDP localport=1434
```

SQL Serveri tulemüürist läbilubamiseks on käsurida:

```
netsh advfirewall firewall add rule name="SQL Server SAF" dir=in  
action=allow program="%ProgramFiles%\Microsoft SQL  
Server\MSSQL11.SAF\MSSQL\Binn\sqlservr.exe" enable=yes
```